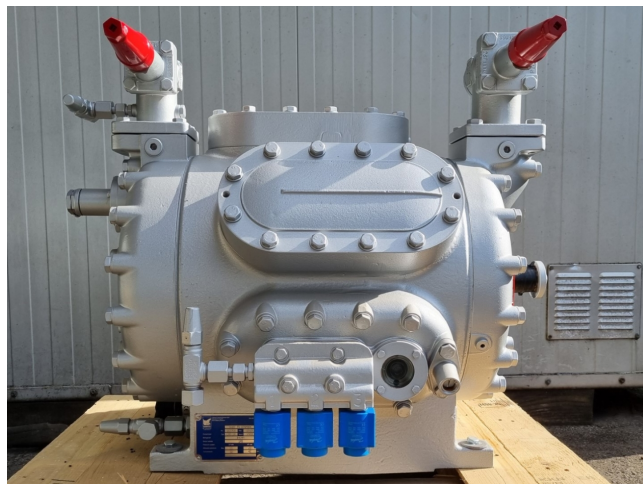


Sabroe CMO 26

Specifications

Marka	Sabroe
Typ	CMO 26
Czynnik chłodzący	Freon
kW at +10°C/+40°C	159,3
kW at 0°C/+40°C	108,3
kW at -5°C/+40°C	87,6
kW at -10°C/+40°C	69,9
kW at -20°C/+40°C	41,9
kW at -30°C/+40°C	22,3
Okno widokowe	✓
Zawór	✓
elektromagnetyczny	
m ³ / h	145
Uwagi	Y.o.b. 2018
Waga kg.	520
Rozmiary	800x600x680 mm (LxWxH)
Stock	1



Description

Used Sabroe CMO 26

New Sabroe CMO 26 reciprocating compressor on Freon build in 2018 with a sight glass. The compressor has a displacement of 145 m³/h.

*Why choose for HOSBV? Were not only the largest used refrigeration specialist in Europe, but also, we deliver all equipment including an extensive test, warranty and industrial cleaning.

*Optional we can also perform a new paint job and arrange the logistics.

